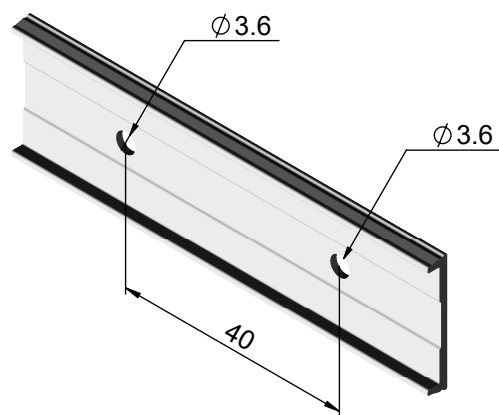
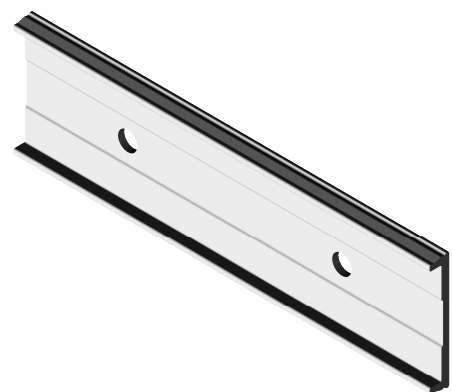
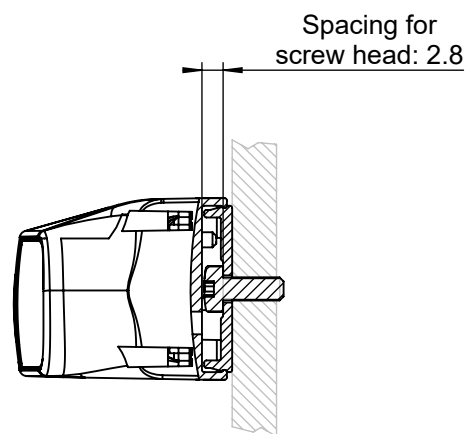
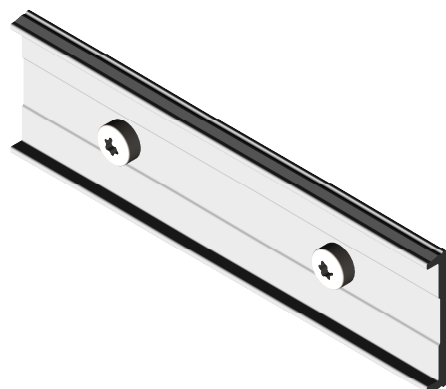


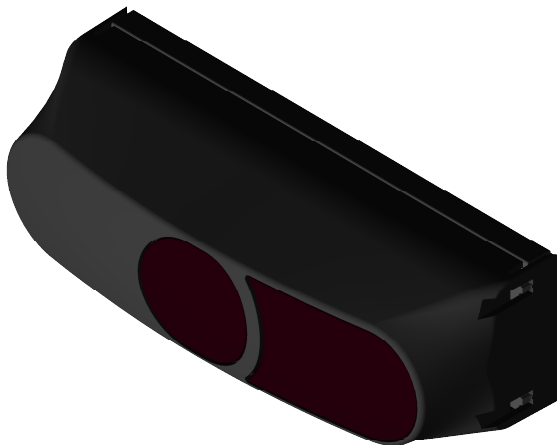
1.) Place the mounting plate in position.



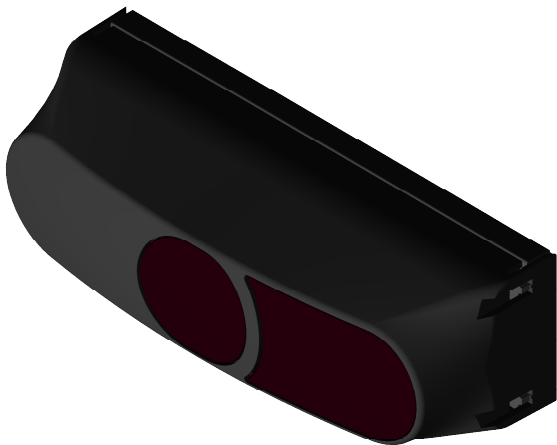
2.) Fix the mounting plate with two screws with a maximal screw head height of 2.8mm. (e.g. M3 cross-head screws, M3 hexalobular screws or ST3.5 tapping screws etc.)



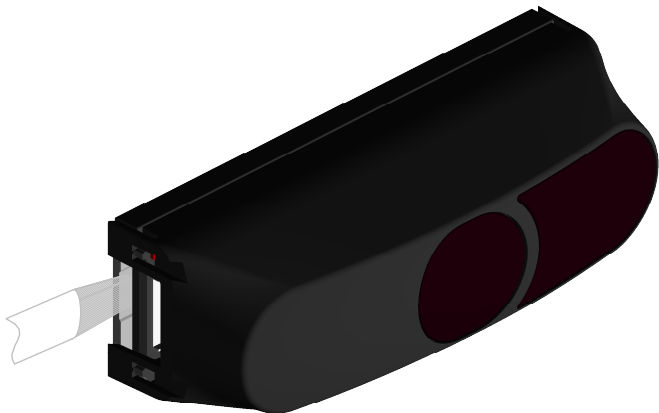
3.) Clip the camera onto the mounting plate






4.) Connect the cable



To remove the camera, take a slotted screw driver for example (size 1 or bigger) and place the tip between the two aluminium plates. Just turn the screwdriver or lever the camera away from the mounting plate.



 Values unless otherwise stated in mm

Material					Surface Treatment					Standard Tolerance	
Version	1	2	3	4	5	6	7	8	9	10	
Change No.											Form DIN A3
Designed	02.10.19	RBR									Scale 1:1
Approved											Page 1/1
 					Part Name					Document No.	
					TOF>cam 635; camera mounting						