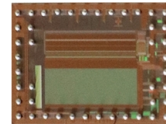


TIME-OF-FLIGHT

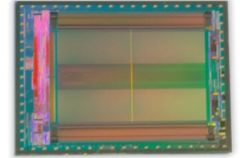
Product Family



epc611
8x8 pixel



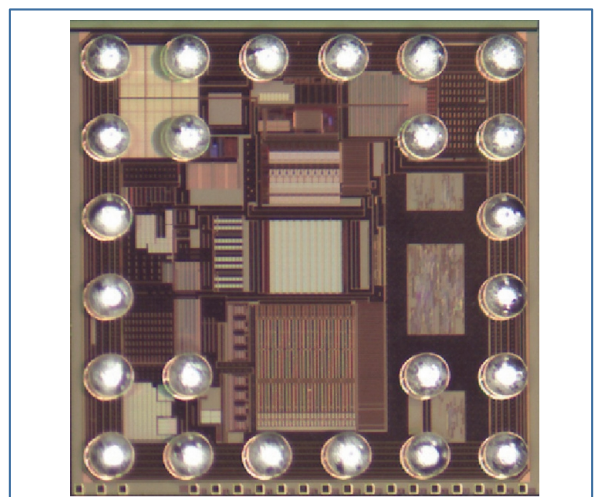
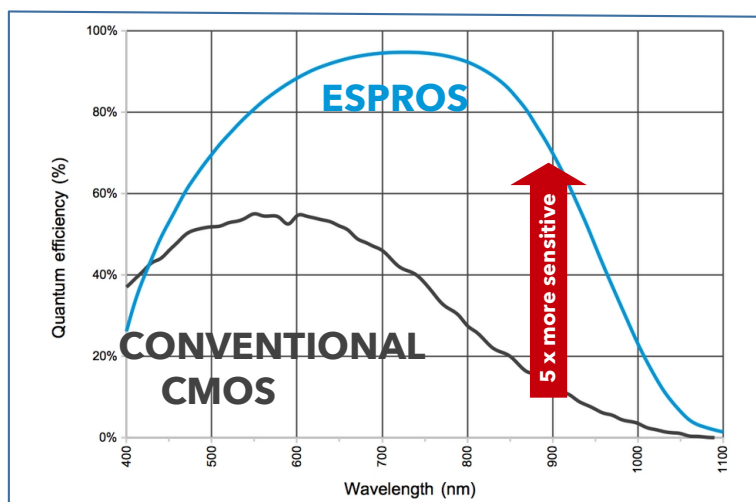
epc635
160x60 pixel



epc660
320x240 pixel

FEATURES

- ✓ Very high photo-sensitivity
- ✓ On-chip ADC and control
- ✓ LED/VSEL driver integrated
- ✓ Up to 100 kLux sunlight suppression
- ✓ Extended distance range (10 m +)
- ✓ Reduced power consumption
- ✓ Ultra small CSP package
- ✓ No companion chip needed
- ✓ System on chip
- ✓ Unique CCD technology
- ✓ Less BOM part count, less cost



APPLICATIONS

Gesture
Recognition



In-cabin
Monitoring



Humanoid and
Household Robots



Doors and
Gates




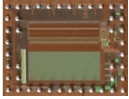
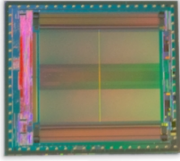
People
Counting



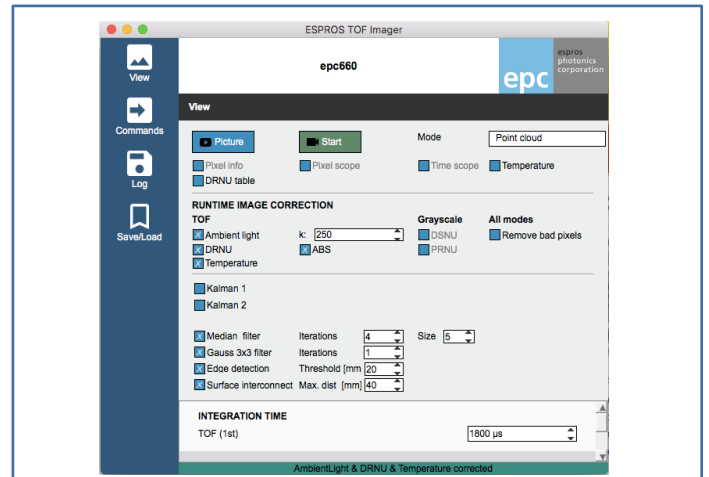
Industrial Automated
Guided Vehicles



TECHNICAL DATA OVERVIEW

Product	epc611	epc635	epc660	Conditions
Picture				
Pixel field	8 x 8	160 x 60	320 x 240	
Pixel pitch	20 x 20 µm			100% fill factor
Photosensitive area	0.16 x 0.16 mm	3.20 x 1.20mm	6.40 x 4.80 mm	
Packaging	CSP24	CSP44	CSP68	
Size	2.7 x 2.8 x 0.25 mm	6.3 x 4.2 x 0.25 mm	9.7 x 8.7 x 0.25 mm	Self-alignment to opt. axis
Frame rate	up to 8'000 fps	up to 512 fps	up to 158 fps	Rolling mode, $t_{INT} = 100 \mu s$
				4 DCS mode, $t_{INT} = 100 \mu s$
Output data	up to 18 bit DCS	12 bit DCS	12 bit DCS	
Data interface	SPI up to 16 MHz	TCMI up to 80 MHz	TCMI up to 80 MHz	
Control interface	SPI	I2C	I2C	
Power consumption	155 mW	300 mW	750 mW	at full frame rate

Evaluation Kit for each chip available



© 2022 ESPROS Photonics Corporation
Characteristics subject to change without notice

CONTACT INFORMATION

www.espros.com

Headquarters Switzerland
phone: +41 58 411 03 00
email: sales@espros.com

US / Canada Sales Office
phone: +1 336 837 8820
email: sales_us@espros.com